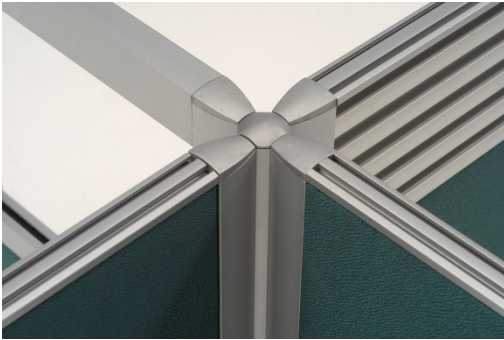


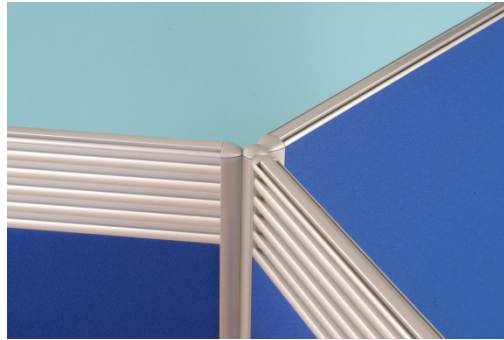
# Icon Screen Types

May 2015

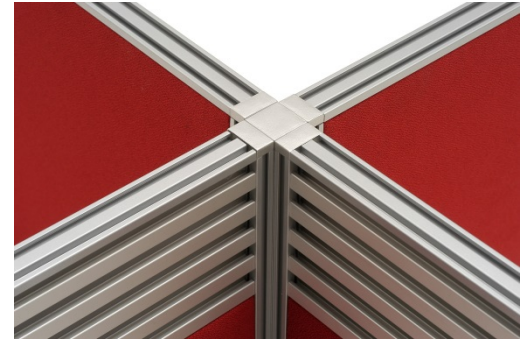
There are 3 main aluminium framed System Screen types:



System 1 - 24mm thick



System 2 - 36mm thick

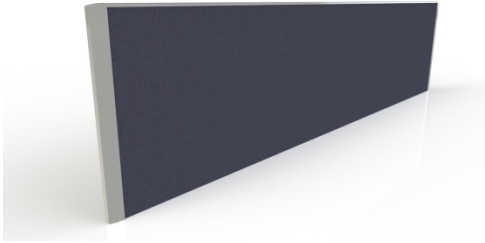


System 5 - 30mm thick

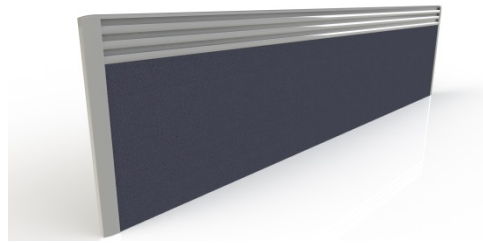
# Icon Screen Types

May 2015

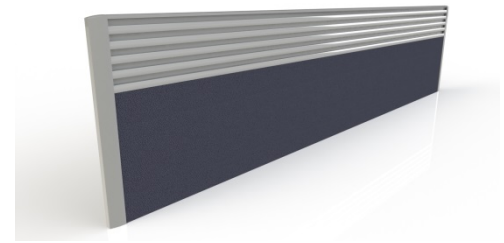
Each system is available in the following screen types:



Fully Upholstered



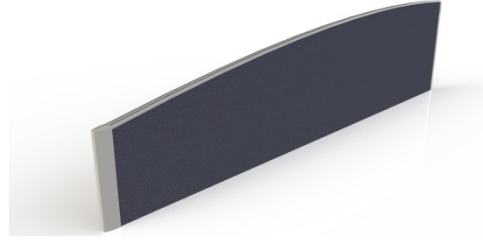
3 Jaw Accessory Rail



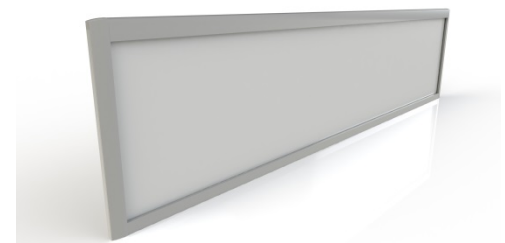
5 Jaw Management Rail



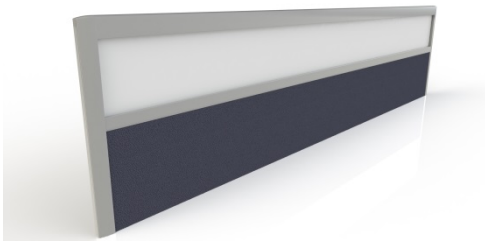
Wave Top



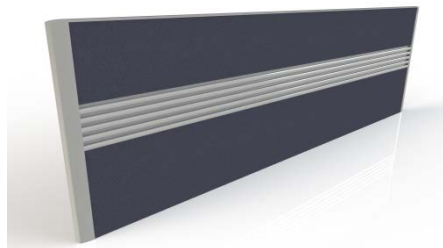
Arc Top



Fully Glazed



Part Glazed



Mid-mounted Acc/Man Rail

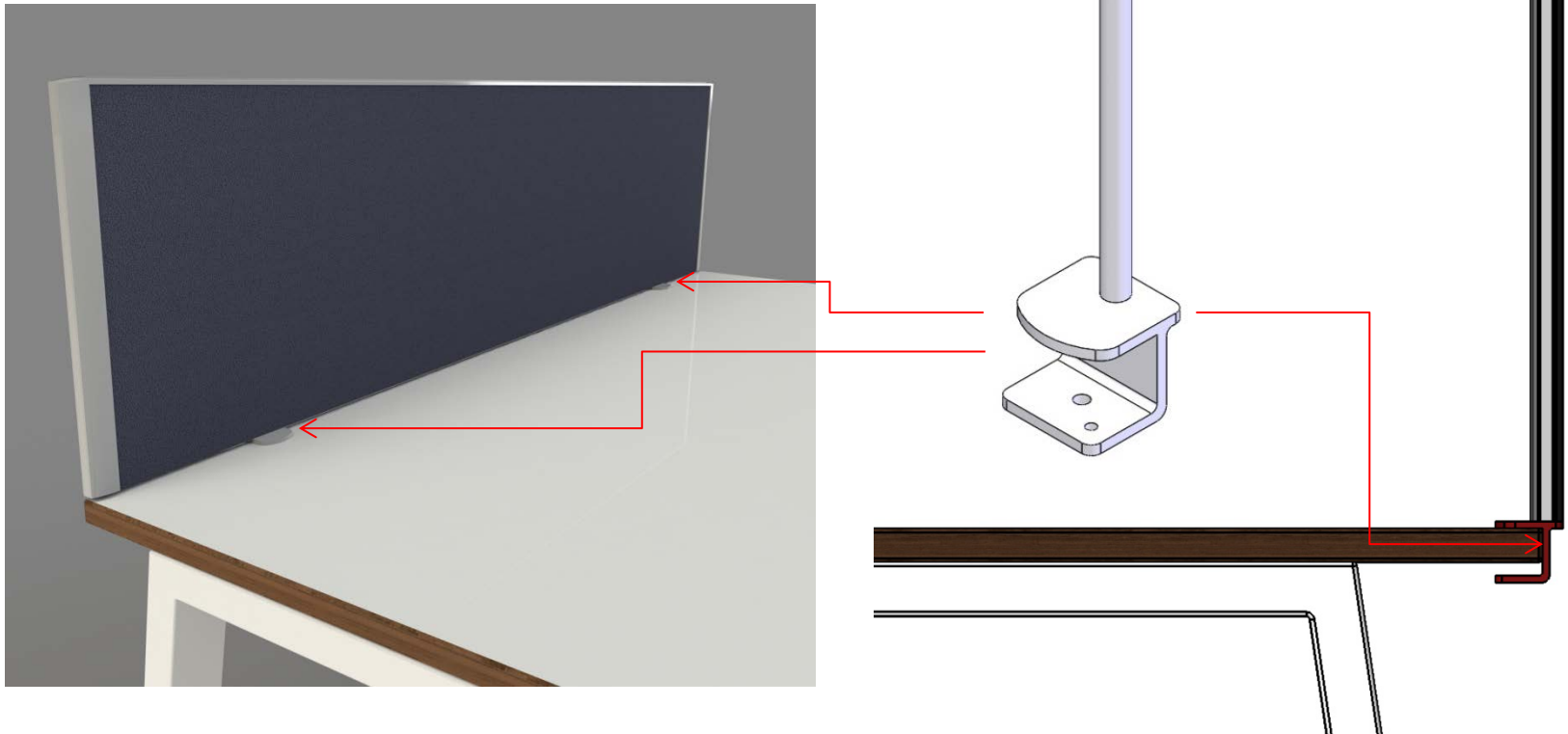


# Icon Screen Types

May 2015

Each screen type is available in one of the following 4 options:

## Option 1 - Desk-up



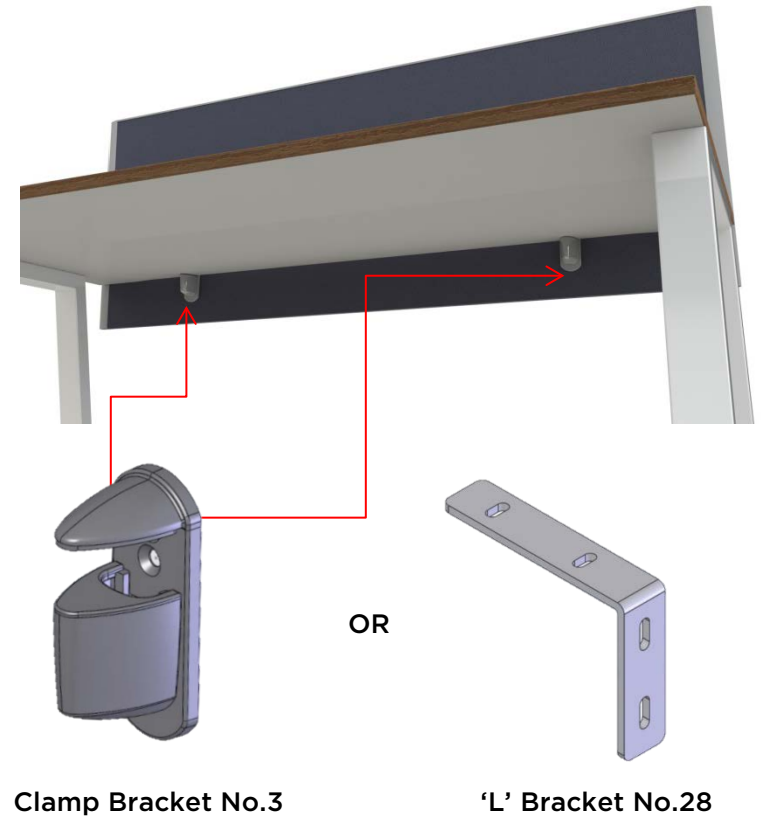
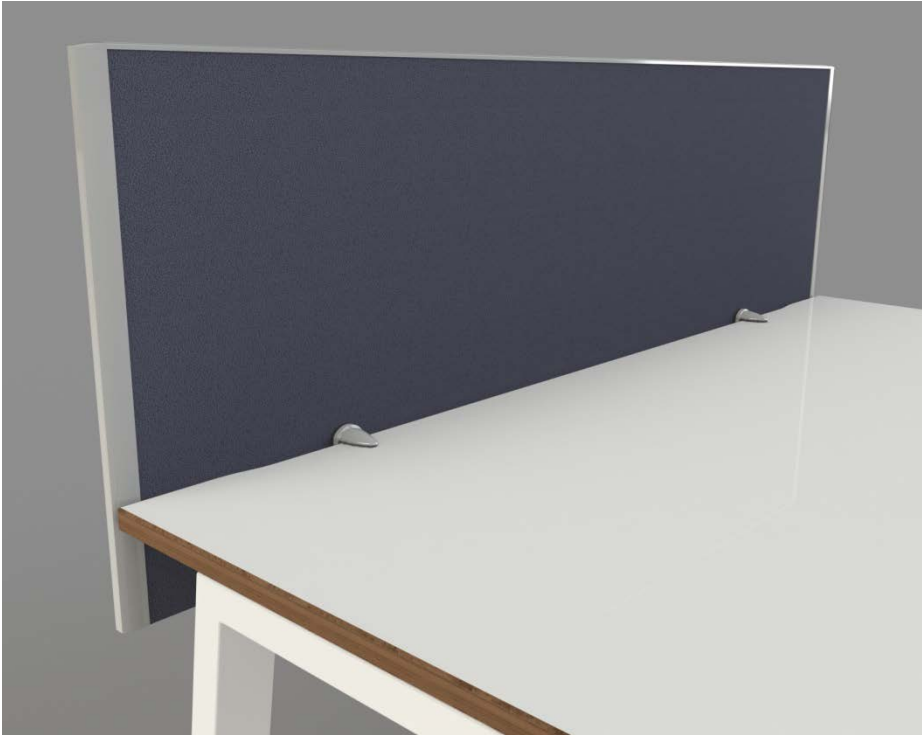
A desk-up Bracket No.1 will allow the screen to sit above the desk top. It is secured to the desk top underside using grub screws. This bracket can suit desk top thicknesses up to 35mm thick.



# Icon Screen Types

May 2015

## Option 2 - Fly-by



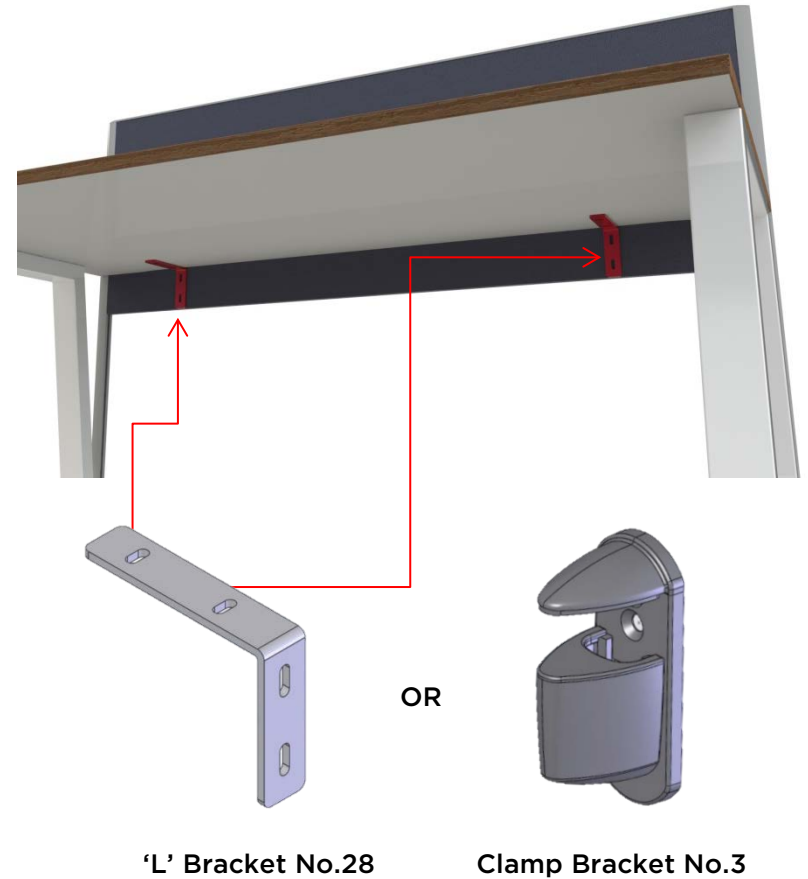
A fly-by screen sits flush with the edge of the desktop and over sails it to create a modesty panel. The screen should over sail the desk top by at least 100mm to suit one of the above fly-by brackets.



# Icon Screen Types

May 2015

## Option 3 - Goal Post



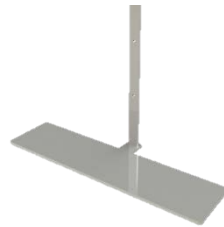
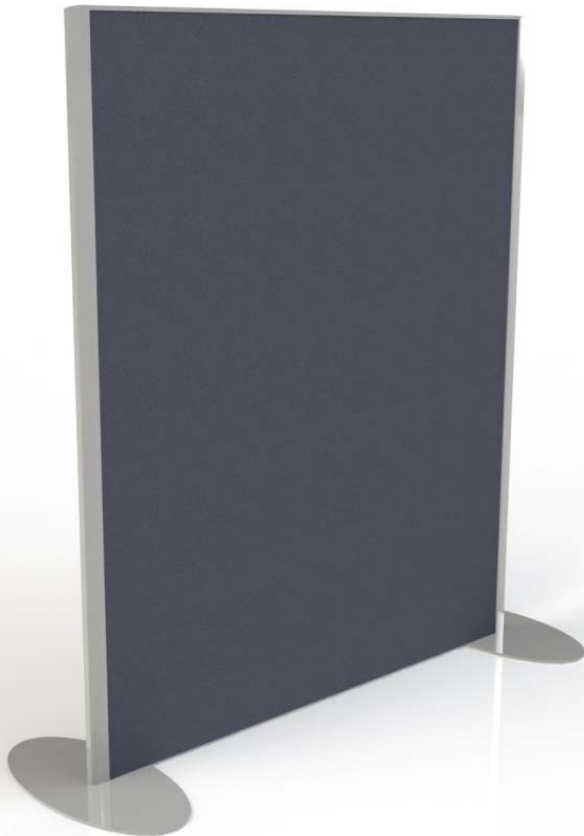
A Goal post screen is supported by the floor and is secured to the back edge of the desktop. The screen should over sail the desk top by at least 100mm to suit one of the above fly-by brackets.



# Icon Screen Types

May 2015

## Option 4 - Freestanding



Rectangular Foot  
(System 5 only)  
100 x 400



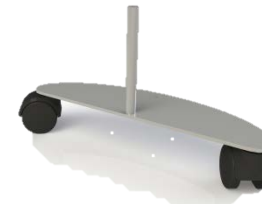
Elliptical Foot  
200 x 400



Half Elliptical Foot  
100 x 400



Half Elliptical Foot  
200 x 200



Mobile Foot  
100 x 400

Freestanding screens are supported by feet which are located up each end post.

