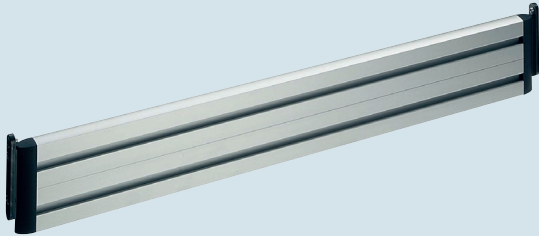










NOVUS SlatWall-Visio element

SlatWall elements are available in 4 different lengths. They can be combined with TSS and DSS solutions already in use and mounted in varying numbers and positions.



Version			Art.No.	Bar code
		silver / anthracite	973+0805+000	4009729034941
		silver / anthracite	973+1005+000	4009729034958
		silver / anthracite	973+1205+000	4009729035764
		silver / anthracite	973+1605+000	

Equipment



When used conventional.



The quality statement „German Engineering“ ensures that a product was developed according to german quality standards by our engineering experts. All Novus products carrying the German Engineering by Novus signet are manufactured in our own plants around the world by our own workforce, managed and supervised by our own headquarters in Germany.